

DURASTRIPE®

PEEL-&-STICK FLOOR/AISLE STRIPING

from  **ADVANCED**
TECHNICAL CONCEPTS

DURASTRIPE SUPREME V

DuraStripe Supreme V is the 5th generation of the original DuraStripe, specifically engineered to address the needs of an evolving marketplace. The adhesive on Supreme V provides excellent adhesion in applications where floor conditions are less than ideal. Its low impact profile and tapered edges of the stripe eliminate most impact damage and trip hazards.

SPECS

New building / smooth floors:	Superior
Porous floors:	Excellent
Old, oily, dirty, or epoxy floors:	Excellent
Uneven or tiles:	Excellent
Available in 5S shapes:	Yes
Available / custom colors:	7 / Yes
Standard widths in Inches:	2" - 34" (5 - 86,5cm)
Beveled edge:	Yes
Roll Length:	100' (30M)
Nominal Thickness:	36 Mils (0,91mm)

DURASTRIPE X-TREME

DuraStripe X-Treme is a heavy duty alternative to Supreme V, designed especially for improved performance in critical environments. Its durable surface layer withstands pivoting forklift wheels and facilitates cleaning. Beveled edges reduce damage potential from dragged or pushed pallets.

SPECS

New building / smooth floors:	Superior
Porous floors:	Superior
Old, oily, dirty, or epoxy floors:	Excellent
Uneven or tiles:	Superior
Available in 5S shapes:	Yes
Available / custom colors:	11 / No
Standard widths in Inches:	2" / 3" / 4" (5 / 7,5 / 10cm)
Beveled edge:	Yes
Roll Length:	100' (30M)
Nominal Thickness:	30 Mils (0,76mm)

DURASTRIPE MEAN LEAN

Mean Lean DuraStripe is our most economical and lowest profile marking product. It has a durable, smooth surface layer that cleans easily and resists damage from pivoting tow-motor wheels. Standard widths from 2", 3" and 4" (5 / 7,5 / 10cm) provide a perfect marking solution for newer or reconditioned/sealed industrial and commercial floors.

SPECS

New building / smooth floors:	Excellent
Porous floors:	Not Recommended
Old, oily, dirty, or epoxy floors:	N.R.
Uneven or tiles:	N.R.
Available in 5S shapes:	Yes
Available / custom colors:	7 / No
Standard widths in Inches:	2" / 3" / 4" (5 / 7,5 / 10cm)
Beveled edge:	No
Roll Length:	200' (60M)
Nominal Thickness:	22 Mils (mm)

DURASTRIPE LEAN

DuraStripe Lean provides the perfect economical solution for newer smooth, clean, polished concrete and epoxy coated floors. It is supplied in 200 ft. (60M) rolls and 7 standard colors for maximum 5S and Six Sigma marking flexibility. Standard widths from 2" to 34" (5 - 86,5cm) make it possible to roll out easily identified pedestrian walkways without ever having to paint.

SPECS

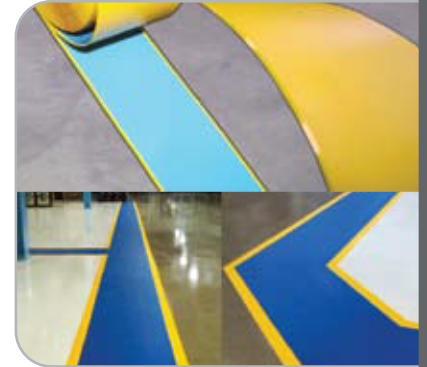
New building / smooth floors:	Excellent
Porous floors:	Not Recommended
Old, oily, dirty, or epoxy floors:	N.R.
Uneven or tiles:	N.R.
Available in 5S shapes:	Yes
Available / custom colors:	7 / No
Standard widths in Inches:	2" - 34" (5 - 86,5cm)
Beveled edge:	No
Roll Length:	200' (60M)
Nominal Thickness:	30 Mils (0,76mm)

DURASTRIPE MULTIFLEX (EUROPE ONLY)

This European made, first generation DuraStripe set the standard for all aisle striping products available on the market today. This product is ideal for applications where there is light to moderate forklift traffic.

SPECS

New building / smooth floors:	Superior
Porous floors:	Good
Old, oily, dirty, or epoxy floors:	Good
Uneven or tiles:	Good
Available in 5S shapes:	Yes
Available / custom colors:	7 / No
Standard widths in Inches:	2" / 3" / 4" (5 / 7,5 / 10 cm)
Beveled edge:	Yes
Roll Length:	100' (30M)
Nominal Thickness:	39 Mil (1mm)



ADVANCED
TECHNICAL CONCEPTS
Design For Purpose

E: sales@atcgroup.ie

W: www.atcgroup.ie

COMPONENTS | ENGINEERING | MECHANICAL | LEAN | ADDITIVE

DURASTRIPE®

PEEL-&STICK FLOOR/AISLE STRIPING

from  **ADVANCED**
TECHNICAL CONCEPTS

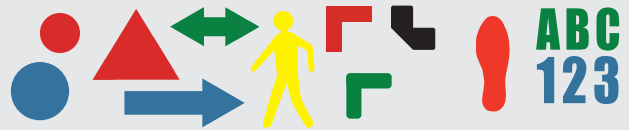
DURASTRIPE SIGNS

Our vivid, UV fade resistant signs are the perfect solution for communicating important safety, 5S/Lean Manufacturing and Lockout/Tagout instructions on the production floor. These durable signs can be made with peel-&stick or magnetic backing, and in glow material for maximum visibility and installation flexibility. DuraStripe signs are easily customized with full color graphics and they are produced to withstand heavy industrial traffic. They require none of the downtime, dry time, cure time, or messy clean up associated with painting. All signs are also available in larger formats for bold warnings and reminders.



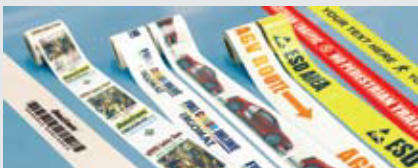
DURASTRIPE SHAPES

DuraStripe Shapes are perfect supporting tools for any 5S, Six Sigma, or Visual Workplace programs. Icons, shapes and characters are produced in Lean, Supreme V and X-Treme. They are easy to install and easy to reconfigure, making them ideal devices to support the evolving efficiencies on a production floor. Don't paint and stripe your floor markings, peel-&stick them for simplicity and flexibility.



DURASTRIPE IN-LINE PRINTING

DuraStripe in-line printing is available in multiple color combinations as well as in full vivid graphic color. Reinforce important safety and facility information on 2", 3" and 4" (5 / 7,5 / 10cm) wide stripes. Durable DuraStripe In-Line printing is completely smear resistant for longer service life.



DURASTRIPE WALKWAYS



OSHA Code 1910.22(b)(2) requires that all permanent aisles and passageways be appropriately marked for pedestrian safety. DuraStripe peel-&stick walkways can bring you into immediate compliance, easily, inexpensively and efficiently. Walkways up to 34" / 86,5cm wide are available in 10 standard colors, or can be custom printed in full color to dramatically reinforce important safety reminders.

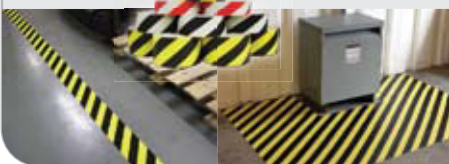
SPECS

New building / smooth floors:	Superior
Porous floors:	Excellent
Old, oily, dirty, or epoxy floors:	Excellent
Uneven or tiles:	Good
Available in 5S shapes:	Yes
Available / custom colors:	3 / Yes
Standard widths in Inches:	2" - 34" (5 - 86,5cm)
Beveled edge:	Yes
Roll Length:	50'
Nominal Thickness:	38 Mils



DURASTRIPE HAZARD STRIPING

DuraStripe 2-color hazard striping is available in 5 color combinations (black/yellow, green/yellow, black/white, red/white, green/white) and multiple widths. This smear and scuff resistant material is perfect for marking areas around equipment that must remain clear at all times, as well as for many other easily understood visual indications.



SPECS

	Lean	Supreme
New building / smooth floors:	Excellent	Superior
Porous floors:	N.R.	Excellent
Old, oily, dirty, or epoxy floors:	N.R.	Excellent
Uneven or tiles:	N.R.	Excellent
Available in 5S shapes:	Yes	Yes
Available / custom colors:	3 / No	5 / Yes
Standard widths in Inches:	2" - 34" (5 - 86,5cm)	2" - 34" (5 - 86,5cm)
Beveled edge:	No	Yes
Roll Length:	200'	100'
Nominal Thickness:	30 Mils	36 Mils

DURASTRIPE GLOW

DuraStripe Glow Striping is the ideal solution for communicating critical evacuation routes and exits in the event of a power outage. Available in 4" / 10cm widths of red, yellow or white background stripes with a glowing inset, Glow Striping complies with DIN67510 Class C, ASTM E2072-04 and ASTM E2030-07 standards.



ADVANCED
TECHNICAL CONCEPTS
Design For Purpose

E: sales@atcgroup.ie
W: www.atcgroup.ie

COMPONENTS | ENGINEERING | MECHANICAL | LEAN | ADDITIVE